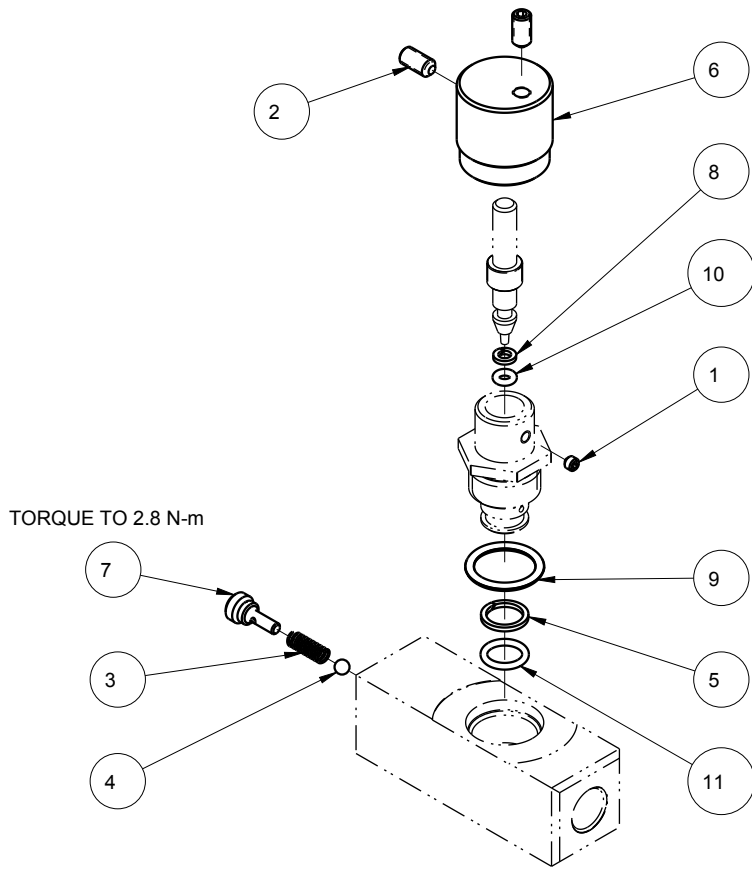



| MODEL NO. |     |          | MODEL NAME                          |          |
|-----------|-----|----------|-------------------------------------|----------|
| MPLV4701  |     |          | ASSY, FLOW CONTROL, METRIC          |          |
| NO.       | QTY | PART NO. | DESCRIPTION                         | SEAL KIT |
| 1         | 1   | 21440022 | SHSS, CUP POINT                     | NO       |
| 2         | 2   | 21500315 | SCREW, SET, CUP PT, M5 X .8-6g X 10 | NO       |
| 3         | 1   | 23310014 | SPRING, COMPRESSION                 | NO       |
| 4         | 1   | 23600014 | BALL, STEEL, ALLOY, .156            | NO       |
| 5         | 1   | 39054010 | BU RING,(-012)                      | YES      |
| 6         | 1   | 87000003 | KNOB, FLOW CONTROL                  | NO       |
| 7         | 1   | 87000049 | PIN, GUIDE, SPRING                  | NO       |
| 8         | 1   | 39F54018 | BU RING,(-006)                      | YES      |
| 9         | 1   | 39V00036 | O-RING, (-908)                      | YES      |
| 10        | 1   | 39V51040 | O-RING, (-006)                      | YES      |
| 11        | 1   | 39V51044 | O-RING, (-012)                      | YES      |
| N/A       | N/A | 6V702000 | KIT, SEAL, FLOW CONTROL, FKM        | NOTED    |



NOTES:  
 1. APPLY LUBRICANT TO ALL SEALS PRIOR TO INSTALLATION.  
 2. DO NOT USE SILICONE TYPE LUBRICANTS.

|                     |  |   |     |
|---------------------|--|---|-----|
| <b>PARTS LIST</b>   |  | <br>VEKTEK, INC.<br>1334 E. SIXTH AVE. P.O. BOX 625<br>EMPORIA, KS. 66801 U.S.A. |     |
|                     |  |   |     |
| ASSEMBLIES AFFECTED |  | *****   |     |
| 47020014            |  | SIZE  | REV |
| L7020014            |  | A   | D   |
|                     |  | <b>MPLV4701</b>   |     |
|                     |  | FORM FEG035_PL_ASIZE, REV. B  |     |

|                   |                        |  |            |          |
|-------------------|------------------------|--|------------|----------|
| D                 | 3320                   | RELEASE                                      | GAR        | 10/17/17 |
| REV               | IN ACCORDANCE WITH ECN | EFFECTIVE DATE                               | REVISED BY | DATE     |
| DRW BY: K. ROEMER |                        | DRAWING STATUS: <b>Released</b>              |            |          |
| DATE: 08/10/07    |                        | PRODUCTION APPROVED FOR RELEASED STATUS ONLY |            |          |

SHEET 1 OF 1